

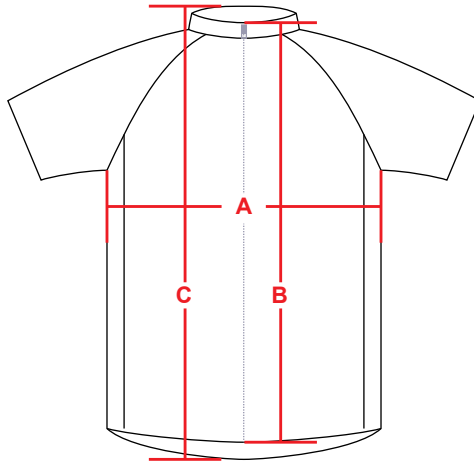
# Size Charts

Measurements are taken with jersey laying flat.

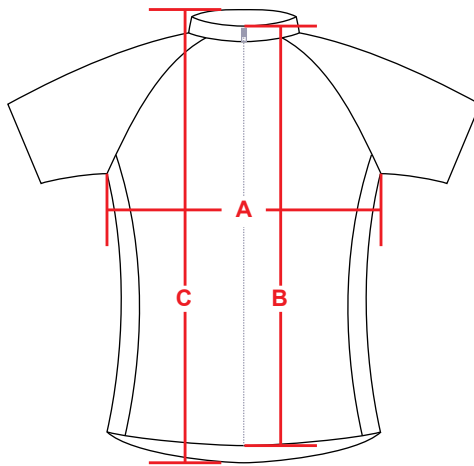
**Chest Width** - Armpit to armpit

**Front Length** - Top of front collar to bottom of front waist hem

**Back Length** - Top of back collar to bottom of back waist hem



Men's Jersey (CM)	XS	S	M	L	XL	2XL	3XL
A-Chest Width	44	47	50	53	56	59	62
B-Front Length	53	55	57	59	61	63	65
C-Back Length	65	67	69	71	73	75	77



Women's Jersey (CM)	XS	S	M	L	XL	2XL	3XL
A-Chest Width	41	44	47	50	53	56	59
B-Front Length	51	53	55	57	59	61	63
C-Back Length	63	65	67	69	71	73	75